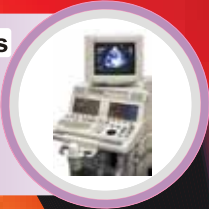


POWEReasy Protection Unit

STOP ELECTRICAL FIRES BEFORE THEY OCCUR

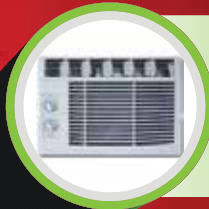
Medical Equipments

BHUBANESWAR
Oct 18 2016
Hospital
22 Deaths



Air Conditioner

DELHI
Feb 12 2018
Hotel
17 Deaths



Christmas Tree

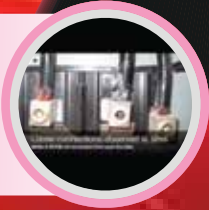
MUMBAI
Dec 30 2018
Home
5 Deaths



**Short
Circuits
Kill**

Loose Wiring

MUMBAI
Jan 4 2018
Shop
12 Deaths



Rodents

BANGALORE
Dec 28 2018
Train
26 Deaths



DID YOU KNOW ?

33

Deaths/day
Due to electrical faults

32:1

Ratio of death to
injuries due to fire

86%

Fire can be prevented
by proper maintenance

You need protection for 12 electrical faults to prevent fires

POWEReasy is India's 1st IoT enabled intelligent device that reports high risk electrical faults that the user must fix to avoid fires. It even isolates supply for critical faults. **POWEReasy** protects from 12 fire risks whereas an MCB and RCCB protects from only 3.



**Prevent
Fire**

Save lives
and assets



**Early
Warnings**

Prevent
unplanned
shutdown



**Actionable
insights**

Improves
efficiency
of electrician



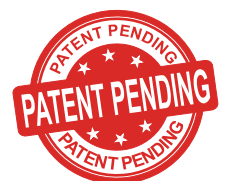
**Reports
to app**

Monitoring
on the go



Available option

- ★ 1 Phase 16A, 32A, 63A
- ★ 3 Phase 32A, 63A



SPECIFICATIONS FOR POWEReasy PROTECTION UNIT

PARAMETER	FEATURES	SINGLE PHASE			THREE PHASE	
Electrical	System Technology	Microcontroller sensed electrical fault signatures and realtime monitoring, reporting and automatic isolation				
	Capacity in Amp	16A	32A	63A	32A	63A
	Standards	EN61000-6-4, IEC 61000-4-3, IEC 61000-4-2, IEC 61000-4-4, IEC 61000-4-5, IEC 61000-4-6, IEC 61000-4-11				
Electronics	Primary Microcontroller type	32 bit				
	Firmware version	JL-PE006				
Input	Min voltage	160 V AC			280 V AC	
	Max voltage	290 V AC			500 V AC	
	Nominal Frequency	47-53 HZ			47-53 HZ	
Output	System status indicator	20 x 4 LCD Display				
	Data Monitoring	In app / dashboard				
	Data logging	On cloud for all events				
Environmental	Operating Temperature	0 to 45 Degrees				
	Operating Humidity	95% non condensing				
Protective Features	Alerts for preventive maintenance	1) Over Current			1) Over Current	
		2) Earth Leakage			2) Earth Leakage	
		3) Over Voltage			3) Over Voltage	
		4) Under Voltage			4) Under Voltage	
		5) Earth Voltage			5) Earth Voltage	
		6) Loose Connection			6) Loose Connection	
		7) Current Harmonics			7) Current unbalance	
		8) Power Factor			8) Current Harmonics	
		9) Voltage Harmonics			9) Power Factor	
		10) Short term Interruptions			10) Voltage Harmonics	
		11) Voltage variation			11) Short term Interruptions	
		12) Inrush current			12) Voltage variation	
		13) Reverse current			13) Voltage unbalance	
					14) Inrush current	
				15) Reverse current		
	Power cut off (with reports & logs)	1) Short circuit			1) Short circuit	
		2) Over current			2) Over current	
		3) Critical Earth leakage			3) Critical Earth leakage	
		4) Critical Over voltage			4) Critical Over voltage	
		5) Critical Under voltage			5) Critical Under voltage	
		6) Critical Earth voltage			6) Critical Earth voltage	
		7) Phase loss / Line loss			7) Neutral loss	
		8) Arcing			8) Phase loss / Line loss	
9) Surge			9) Arcing			
10) Phase / Line reversal			10) Surge			
11) Critical Voltage harmonics			11) Phase / Line reversal			
			12) Critical Voltage harmonics			
	Audible alarm	Audible alarm for faulty operation for 15 sec				
	Isolation device	MCB with shunt trip Provision				
Physical	Dimensions in mm (L X B X H)	180 X 80 X 220mm			220 x 80 X 220mm	
	Weight	2.5 Kg			3.2 Kg	
	Input Output wire connections	Input Line to MCB, Input Neutral, Output Line and Neutral & earth to terminal blocks			Input R, Y, B to MCB Input Neutral, Output, R, Y, B, Neutral & Earth to terminal blocks	
	Mounting	Wall Mounting				
Obligations	Warranty	12 Months Standard				

